





Uniquely Personal

We provide exceptional care in a beautiful setting so that families can remember, mourn and celebrate the lives of their loved ones in a way that is uniquely personal.

Exceptional Care

We want to help you and your family create a funeral or memorial service that is as unique and special as the loved one that you are remembering.

Focused on delivering exceptional care to all families, we have the facilities, expertise and understanding to be able to help you to craft a service that marks your loved one's passing in the most meaningful and personal way.



A final farewell they would have loved

Arranging the final send off and getting balance between your loved one's wishes and your own needs, is by no means an easy task. And with many funeral options available, it can be even more difficult to decide how best to say that final good-bye.

Funeral services have changed over the last decade, with some families moving away from traditional options, but rather focusing on celebrating their loved one's life and remembering them for their individuality. Planning a unique service can often help families to capture the essence of their loved one's personality.

We understand different needs and take great pride in being able to support bereaved families in accommodating their personal choices.



"Amazing staff who are so kind and supportive and carried out my treasured mum's funeral with such respect and dignity"

There are many ways in which we can help make a service uniquely personal, from the choice of music, photography or words, to bringing the family pet along. Other ideas include releasing doves for animal lovers, accommodating other vehicles requested by families instead of a traditional hearse or creating a theme in our chapel based on your loved one's favourite film character or sports team.

If you have a specific idea for your loved one's funeral service, please talk to us.



Beautiful Setting

Hidden in the rolling countryside, Waseley Hills Cemetery and Crematorium is set in 18 acres of established rural parkland and is just 6 minutes away from Junction 4 of the M5, serving the communities of SouthBirmingham, Bromsgrove, Redditch and other parts of North Worcestershire.

Our uniquely designed building elegantly fits in with the local landscape and is built to look after the environment as well as those that have need to use it. Our chapel building features a distinctive living green wildflower roof and the development of the crematorium has included the enhancement of existing wildlife habitats as well as the creation of new ones. Our grounds enhance biodiversity of the local wildlife which includes roe deer, muntjac deer, foxes, green and greater spotted woodpeckers, buzzards, squirrels and a plentiful amount of other bird species.



At this difficult time
we will do anything
and everything to
support you and
your family.



It's about the smallest details

Our staff are always immaculate, friendly and approachable, yet respectful - they are there to help you through this difficult time.

The chapel is always spotlessly clean and the gardens are lovingly tended and regularly maintained by our gardeners.

Our dedication to high standards is for the long term. So when you visit the grounds in the months and years to come, you will find your memorial and its environment sensitively maintained.

We know how important the smallest details can be to families. Whether this applies to the highest standards of quality and care around our facilities, or the extra special touches that we pride ourselves on - our colleagues are dedicated to going the extra mile.



Helping you to remember

Our chapel has a state-of-the-art media centre, providing live webcasts, visual tributes and an almost unlimited music library.

All forms of live music are welcomed and crematorium staff will be pleased to offer any advice you may need. We offer 60 minute slots with 40 minutes in the chapel for each service. This ensures that every family has enough time to hold a personal and dignified funeral.

Our gardens, although new, have natural hoggin pathways providing structure to our ongoing developments. Our team embraces nature and living memorials so, in time, expect to see rows of standard rose trees, bordering our private memorial gardens which overlook the beautiful Waseley Hills Country Park.



We are here to help and are always available to speak to you or your Funeral Director to ensure that everything is ready and in place to remember your loved one.

Our service to you

- Contact us to book a tour of our facilities and grounds
- 60 minute slots with 40 minute chapel time as a standard service
- Extended slots are available on request
- Chapel attendant always on hand
- Complete accessibility throughout the chapel and grounds
- Early and unattended/direct services are also available



- State-of-the-art music facility
- Live streaming service for online viewing
- Wide range of visual tribute options
- Flexible seating for up to 105 people with ample standing room
- Outside speakers available for larger congregations
- Comfortable waiting room
- Beautiful memorial gardens and well-tended grounds
- On-site parking for 120 cars



On the day of the funeral

Arrival at the chapel

Upon arrival, the coffin will be carefully carried into the chapel and placed at the front. Our colleague will be available to greet you and assist with seating arrangements; their focus is to ensure that the funeral service happens as you planned it, giving you and your family the space to focus on what is important.

Faiths & beliefs

We understand the importance of our chapel providing the most suitable environment for you and your family to remember. We can therefore accommodate a service of any religion or belief, and your service can be taken by a religious representative, a civil celebrant or even by friends and family. Your Funeral Director will help you with this choice.

The committal

At the end of the service, a chosen piece of music can be played whilst the lights are dimmed and the curtains can be gently closed.

Floral tributes

Floral tributes are taken to a covered area away from the chapel where they can be viewed in peace and seclusion. They can later be removed by you or your Funeral Director.

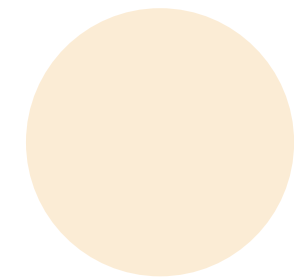




Deciding what to do with the ashes

We understand that making this decision requires time and careful consideration. After the service, we will look after the ashes at the crematorium for as long as you need us to.

From finding a suitable tribute to deciding on a resting place for your loved one, our staff are always available to guide you through your options, and we will contact you just after the service to offer our ongoing assistance.



A fitting tribute

A memorial is a lasting tribute to your loved one - a commemoration of their life. We understand that choosing a memorial is a very personal process, and one that can be deeply emotional.

We are here to support you through that journey to help you to craft a memorial that will celebrate your loved one in the most beautiful way.

Our dedicated team of memorial experts will be available to show and guide you through our range of memorials which can be placed in our tended memorial gardens, cemetery or in a private space, offering you a place to remember and reflect for the generations to come.

Additionally, having a memorial or a small and discreet personal tribute to carry with you can help you to feel close to your loved one and can provide you or your family with that extra bit of comfort.



Disclaimer: Photos used feature facilities at other Westerleigh Group Crematoria and have been used here for illustrative purposes only.

Reflect and remember

There is beauty and peace to be found in our parkland and Memorial Gardens through every season.

The grounds at Waseley Hills Cemetery and Crematorium are tended by a team of passionate and attentive professionals who keep everything well cared for. You are always sure to find a secluded corner to reflect and spend time.



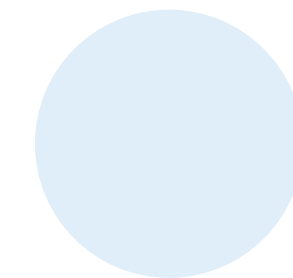


We are always here to show you around

You are welcome to visit our chapel and grounds before the service. In fact, we really recommend that families take the time to visit the chapel before the service happens to familiarise themselves with the setting in their own time.

We are also very happy to discuss your wishes, requirements, and any specific needs you may have.

Simply call us to make an appointment or ask your Funeral Director to arrange a convenient time.





Uniquely Personal

Waseley Hills Crematorium is privately run by Westerleigh Group, the UK's largest independent owner and operator of crematoria and cemeteries, with facilities in England, Scotland and Wales, all set within beautifully landscaped gardens of remembrance which provide pleasant peaceful places for people to visit and reflect.

Our facilities are designed to blend in with the natural surroundings and to ensure that families have the peace and privacy that is so needed when remembering and celebrating their loved ones.





*Please do not hesitate to
contact us if you would like to
arrange a visit and meet us.*



Waseley Hills Cemetery & Crematorium
New Inns Lane, Rubery,
Birmingham B45 9TS
t: 0121 387 0710
e: waseleyhills@westerleighgroup.co.uk
www.waseleyhillscrematorium.co.uk

